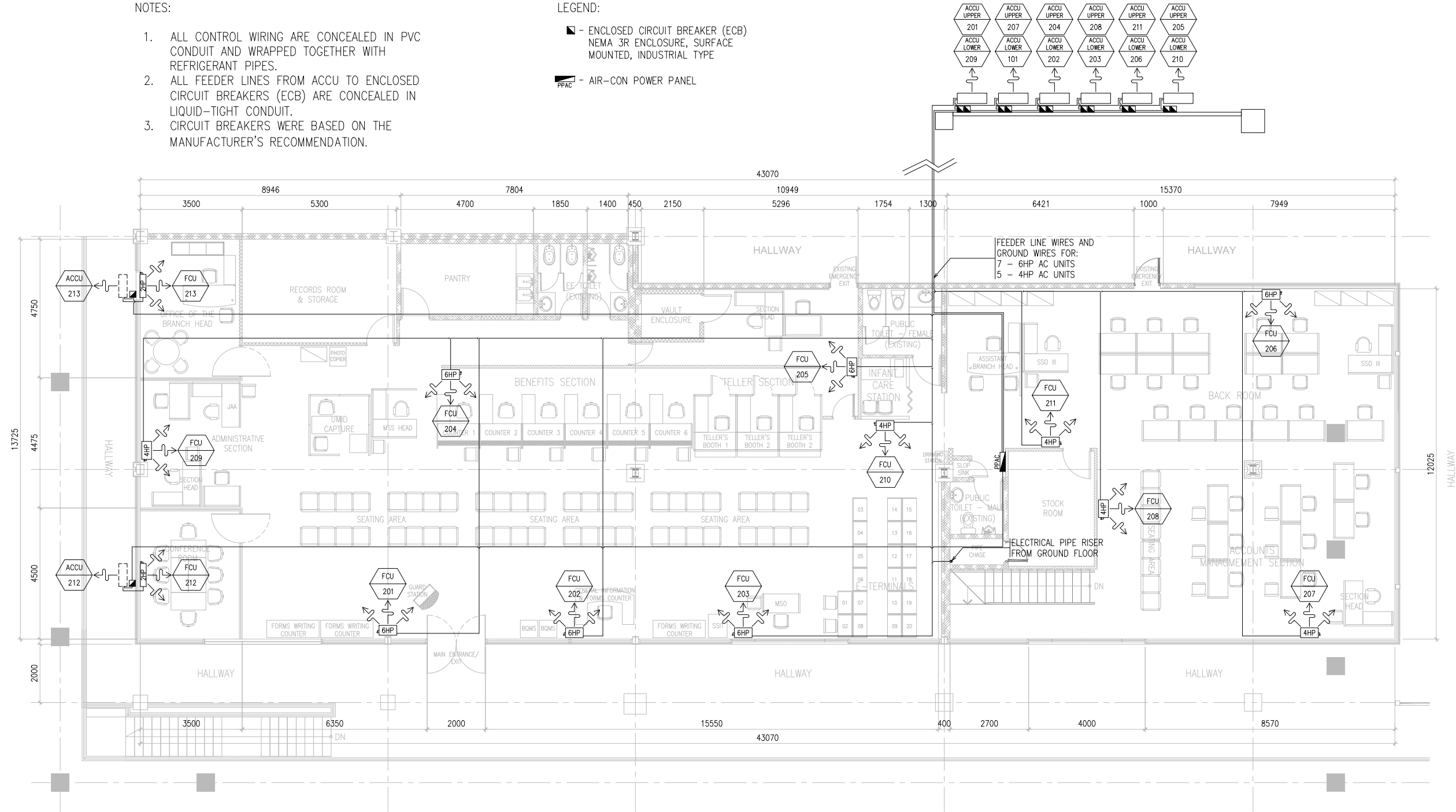


NOTES:

1. ALL CONTROL WIRING ARE CONCEALED IN PVC CONDUIT AND WRAPPED TOGETHER WITH REFRIGERANT PIPES.
2. ALL FEEDER LINES FROM ACCU TO ENCLOSED CIRCUIT BREAKERS (ECB) ARE CONCEALED IN LIQUID-TIGHT CONDUIT.
3. CIRCUIT BREAKERS WERE BASED ON THE MANUFACTURER'S RECOMMENDATION.

LEGEND:

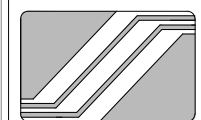
- - ENCLOSED CIRCUIT BREAKER (ECB)
NEMA 3R ENCLOSURE, SURFACE MOUNTED, INDUSTRIAL TYPE
- - AIR-CON POWER PANEL



PARTIAL SECOND FLOOR PROPOSED A/C ELECTRICAL LAYOUT

1
M-05

SCALE 1:150



SOCIAL SECURITY SYSTEM

ENGINEERING AND FACILITIES MANAGEMENT DEPARTMENT

PROJECT TITLE:
PROPOSED RELOCATION OF SSS PASAY - ROXAS BRANCH
LOCATION: Seascape Village, Atang Dela Rama cor. Zoilo Hilario St., CCP Complex Brgy. 076, Pasay City

RECOMMENDING APPROVAL:
STEPHEN P. YAP ACTING HEAD - EFMD

APPROVED BY:
<u>HYDEE R. RAQUID</u> ACTING HEAD - GSD

APPROVED AS USER/OWNER:
<u>MARIA RITA S. AGUJA</u> CONCURRENT ACTING HEAD NCR OPERATIONS GROUP

APPROVED FOR IMPLEMENTATION:
<u>JOHNSY L. MANGUNDAYAO</u> ACTING HEAD - ADMINISTRATION GROUP

ENGINEERING TEAM
DESIGNED & DRAWN BY: Antonio V. Trinos, Jr - Sr. Engr, EMT-1
REVIEWED & CHECKED BY: George N. Carreon - SSO V, EMT - 1

SHEET CONTENT:
PARTIAL SECOND FLOOR PROPOSED A/C ELECTRICAL LAYOUT

ALL DRAWINGS MUST BE VERIFIED ON SITE BY THE CONTRACTOR. ALL DISCREPANCIES SHOULD BE REPORTED IMMEDIATELY TO THE ARCHITECT AND PROJECT MANAGERS.
CONTRACTORS ARE TO PREPARE AND SUBMIT SHOP DRAWINGS TO THE ARCHITECT PRIOR TO COMMENCEMENT OF WORKS.

SHEET NO.
M-05
DATE: April 22, 2021