

PROJECT: REPLACEMENT OF VCB NO. 1 & 2 AT POWER SUBSTATION 1

QUERIES DURING PRE-BID CONFERENCE:

	Query/Clarifications	TWG/BAC Reply
1	Clarifications regarding technical specifications: Is it possible to recommend a different model or brand of switch gear?	As long as technical specs are requirement compliant any brand or model is acceptable.
2	Are we going to refurbish the enclosure?	Yes, it is included in the scope of works.
3	Clarification regarding site inspection schedule: When is the site inspection schedule?	Anytime tomorrow and onwards even on a Saturday or Sunday from 8:00AM to 5:00PM whoever is on duty at EFMD.

WRITTEN QUERIES:

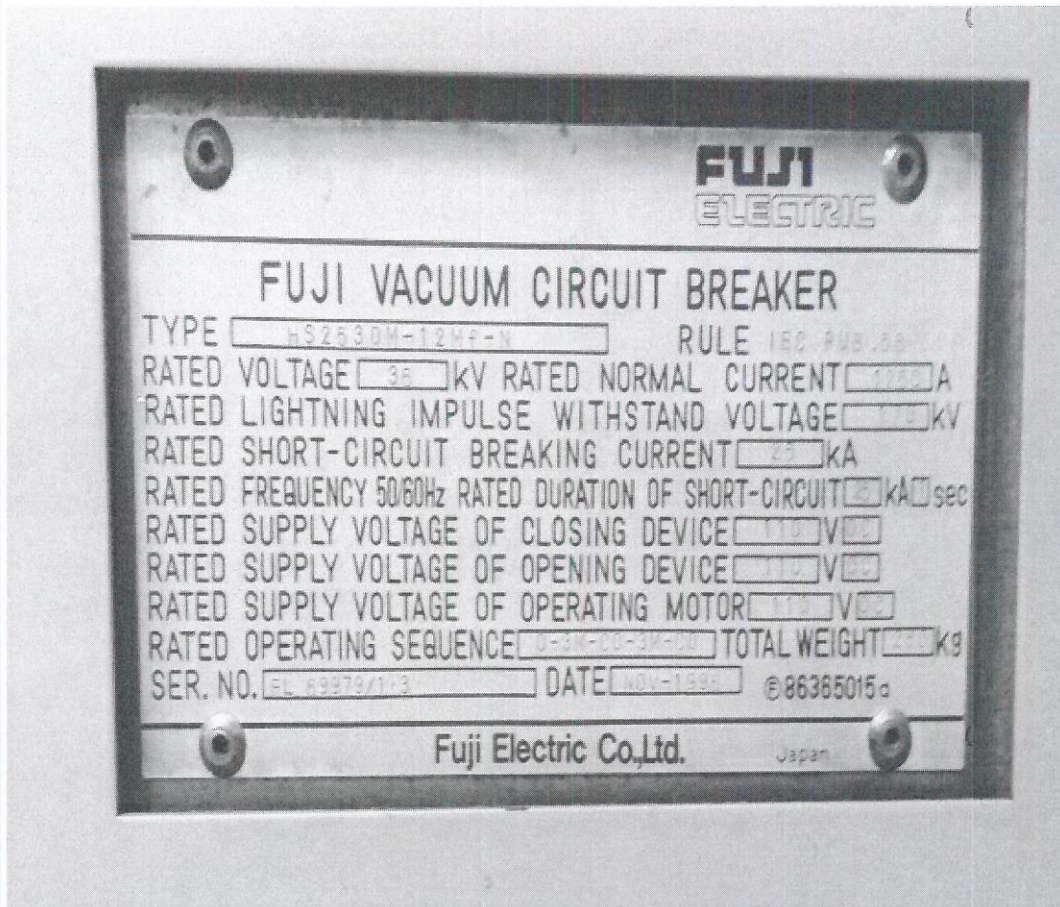
	Query/Clarifications	TWG Reply
1	Requesting for Single line diagram	See attached copy of single line diagram, "Annex A1"
2	Site Inspection Schedule	Weekdays: Monday to Friday. 8AM to 5PM Contact Person: Engr. Francis Flores - 0977-3360597 Engr. Elmer Mescallado - 0917-5792849 Engr. George Carreon - 0917-300-2862
3	Preferred brand of VCB	None, provided appropriate safety protection standards are complied with.
4	Serial Number of Existing VCB	Serial no.: FL 69979/ 1.3 <i>see attached copy of name plate "Annex B"</i>
5	Already been queried during on-line Pre-bid Conference: - Requirement for VCB is withdrawable type, can we offer and recommend other type of switchgear (Gas Insulated Switchgear- VCB Fixed Type)?	No.

6	<p>Specification for rated Current is 1250A</p> <p>– Can we offer our VCB rated up to 630A? The reason is the current rating requirement is over specs since existing power transformer rating is only 1.5MVA, 34.5KV/ 480V which is more than enough based on the computed current for full load operating capacity</p>	<p>Yes, as long as the offered product can provide appropriate and suitable design protection for the equipment.</p> <p>Bidders are required to submit Certification signed by Professional Electrical Engineer/ Practitioner stating the safety compliance of the offered product.</p>
7	<p>Requirement for refurbishment of existing enclosure</p> <p>- Can we offer a total replacement of existing enclosure? As new switchgear will be installed with complete accessories enclosed in NEMA 3R.</p>	<p>Yes, with IEC Standard Compliant or its approved equivalent</p>
8	<p>Please clarify also that old XLPE Cable will be re-used in case existing XLPE is short and not enough to terminate in new switchgear, SSS will provide new XLPE from their stock (50mm² XLPE Cable)</p>	<p>No. Any additional XLPE cable to be used for retrofitting must be included in a bid price</p>

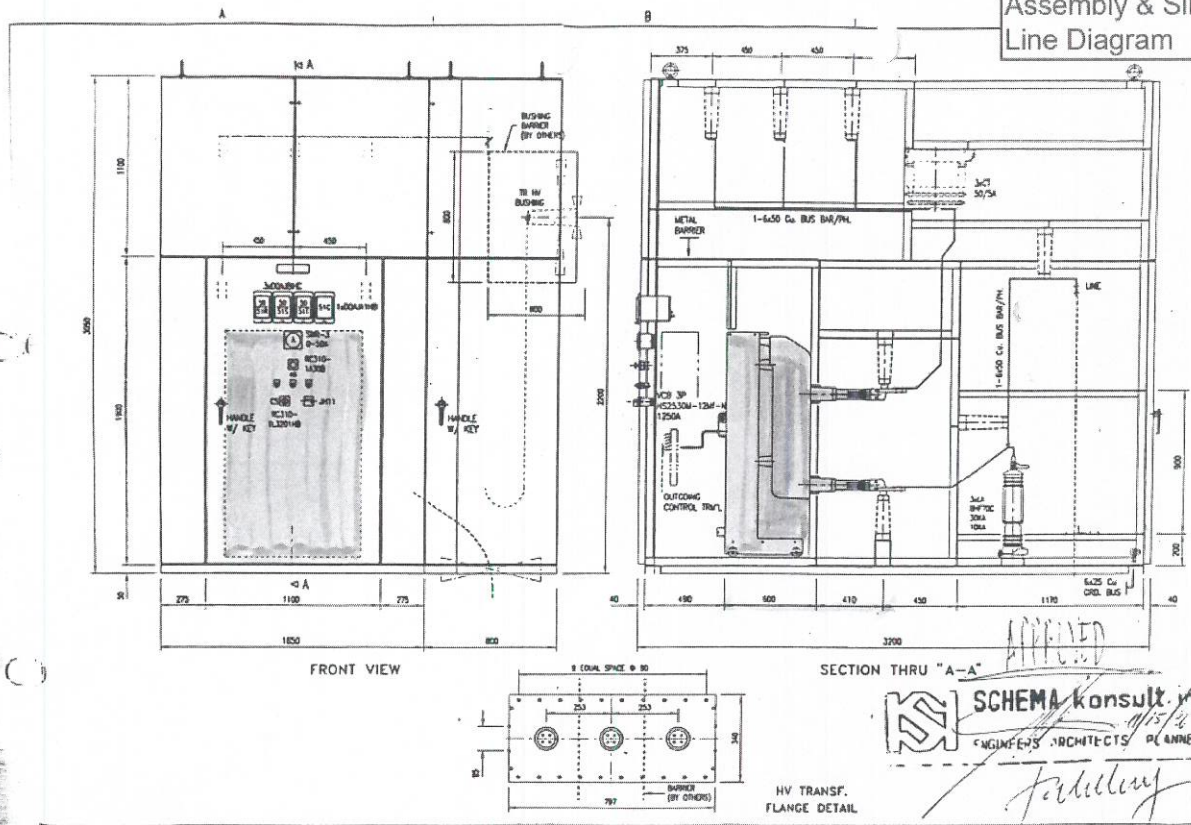
<p>FURTHER INSTRUCTIONS</p>
<p>Item II VCB Package and accessories</p>
<p><i>Bidder must submit a duly signed Certificate of Commitment to deliver and install the following listed items which shall be considered as parts and components of the project, based on the manufacturer's standard</i></p>
<p>The said Certificate of Commitment must state the parts and components listed below:</p>
<ul style="list-style-type: none"> • Lightning Arresters: 30KV, 3 phase, 10kAIC • Digital Multi-function Power Meter with Protective Relay System • Power Cable Terminal Connections • Control with essential wiring system and accessories <ul style="list-style-type: none"> ➤ Potential Transformer (PT) ➤ Current Transformer (CT) ➤ Selector Switch (line 1, 2 & 3) ➤ Push buttons ➤ Pilot Lights Indicator (Trip-off, On & Off) • Sets of Space Heaters and lightings. • Bus bars fittings and Connectors

ANNEX "A1"

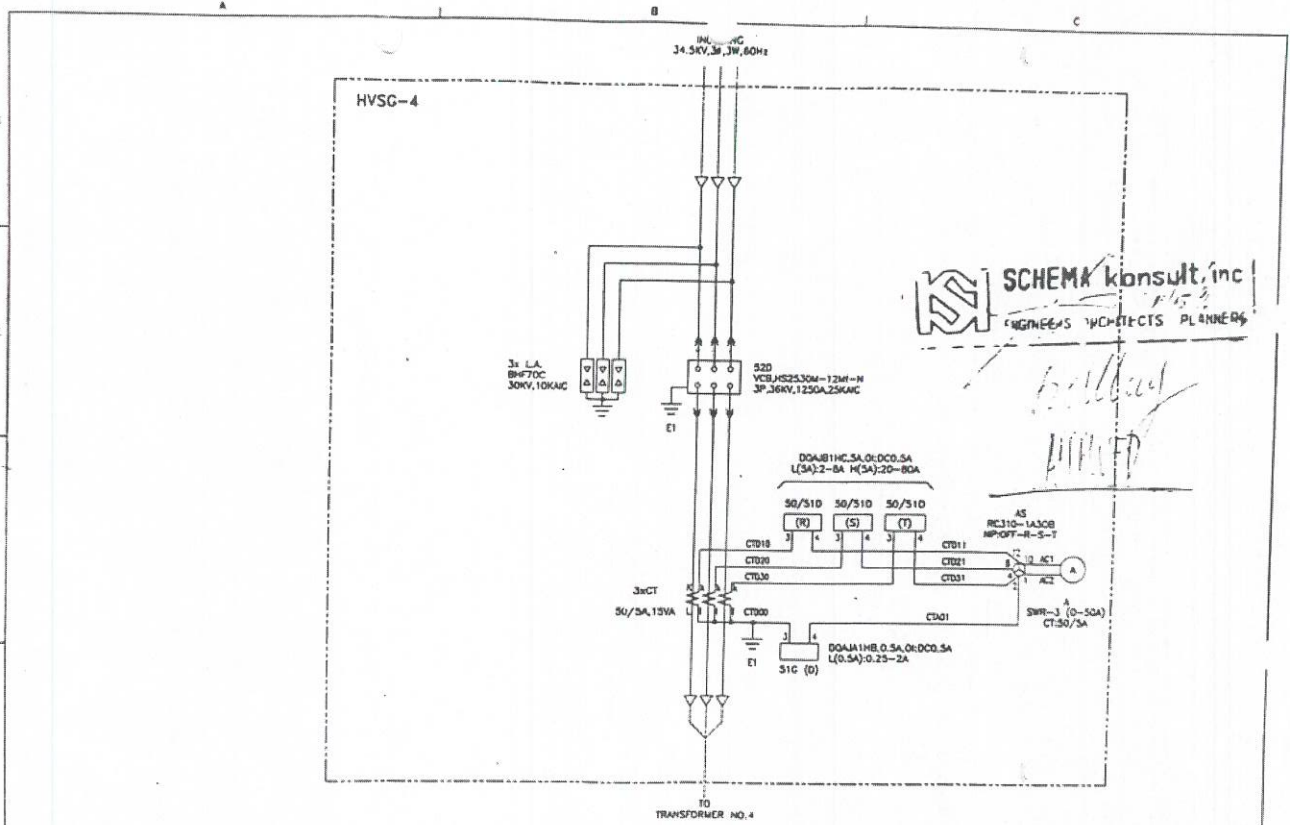
VCB NAME PLATE



"ANNEX B"
Assembly & Single
Line Diagram



DATE	NAME	SCALE	TITLE	PROJECT
10-15-96	NSRAMS	1:20	ASSEMBLY DRAWING OF 34.5KV SWITCHGEAR [VCB-3]	INPHASE INDUSTRIAL CONST. / SSS
11 NOV 96	CHKD			
	APPD			
	DWG. REF.	4020		DWG. NO. FS-09142-01-2-6-02



DATE	NAME	SCALE	TITLE	PROJECT
AUG 28, 98	ALLAN		THREE-LINE DIAGRAM OF 34.5KV HV SWITCHGEAR (HVSG-4)	INPHASE / SSS MAIN
	CHKD			
	APPD			
	DWG. REFERENCE			DWG. NO. FS-09142-01-9-6-04